

DATASHEET

Biotin Tyramide Signal Amplification Kit - Janelia Fluor® 525

Product overview

Name

Biotin Tyramide Signal Amplification Kit - Janelia Fluor® 525

Cat No

HB19791

Biological description

Biotin Tyramide Signal Amplification Kit - Janelia Fluor® 525 enables immunofluorescent detection of low abundance targets with a bright and photostable fluorophore. Biotin Tyramide Signal Amplification Kits enhance signal through deposition of biotin tyramide on neighbouring molecules. Janelia Fluor® 525 detects biotin with extremely high affinity, resulting in increased sensitivity and signal detection. Janelia Fluor® 525 and the other members of the Janelia Fluor® family are bright and highly photostable fluorophores particularly suited for super resolution imaging such as dSTORM and STED.

This kit provides the reagents for 100 x 1 mL reactions, with a protocol that can easily be adapted for immunohistochemistry (IHC), immunocytochemistry (ICC) and in situ hybridisation (ISH).

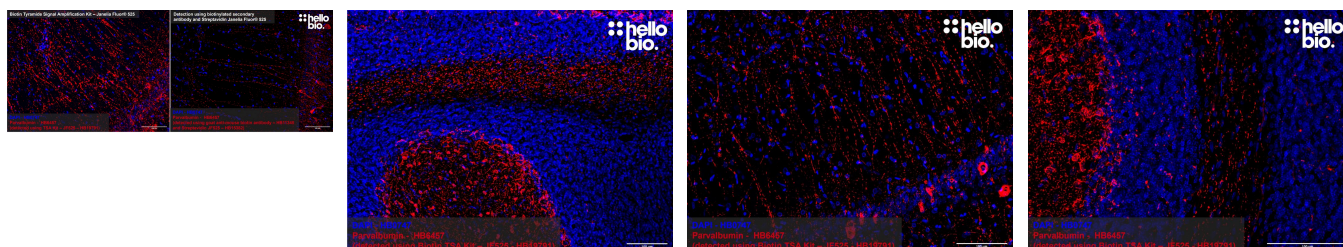
Key features:

- Janelia Fluor® 525 Streptavidin for detection (Ex: 534nm, Em: 559nm)
- Bright and photostable signal for repeated imaging
- Enhanced signal of hard-to-detect targets
- Reduced primary antibody use
- Suited for IHC(IF), ICC, FISH
- Suitable for super resolution imaging

Applications Description

fluorescence imaging, ICC, IF, IHC(IF)
Immunofluorescent signal amplification kit using biotin tyramide and Streptavidin Janelia Fluor® 525.

Images



Biological Data

Application notes**Biotin Tyramide Signal Amplification Protocol**

Please follow [this link](#) to the amplification protocol.

Solubility & Handling

Storage instructions -20 °C

Reconstitution advice