

Hello Bio, Inc.  
304 Wall St., Princeton, NJ 08540 USA

T. 609-683-7500  
F. 609-228-4994

customercare-usa@m2stage.hellobio.com



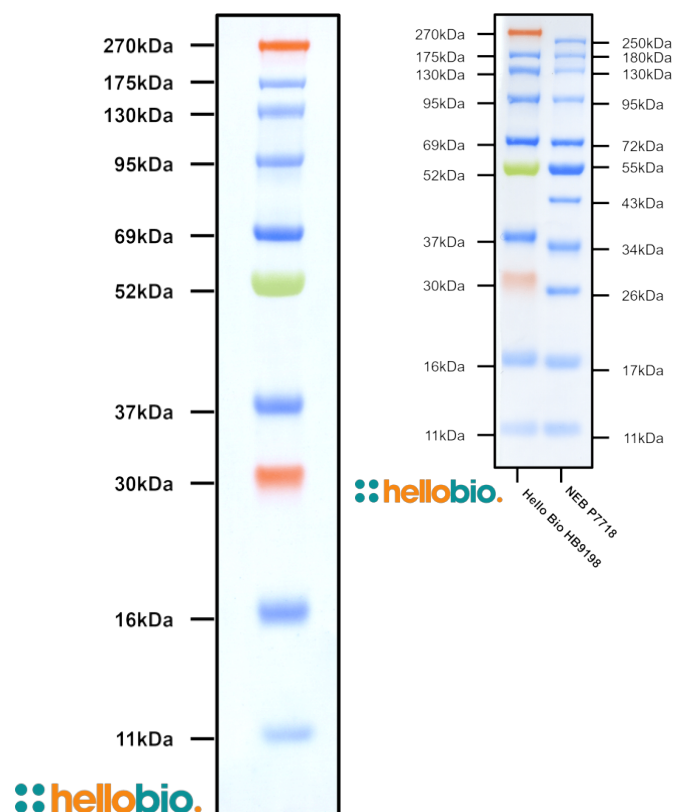
## DATASHEET

Prestained Protein Ladder (11 – 270 kDa)

### Product overview

<b>Name</b>	Prestained Protein Ladder (11 – 270 kDa)
<b>Cat No</b>	HB9198
<b>Biological description</b>	Dual color protein broad range protein ladder used for estimated the molecular weight of unknown proteins in SDS-PAGE and Western Blotting. Contains 10 proteins of known molecular weights coupled to chromophores for easy visualisation.
<b>Applications</b>	WB, SDS-PAGE
<b>Description</b>	Dual color broad range protein ladder

### Images



### Biological Data

<b>Application notes</b>	We recommend loading between 2µl and 5µl per lane of a polyacrylamide gel. There is no need heat, reduce or dilute in sample buffer before use.
--------------------------	---

## Solubility & Handling

Storage instructions	-20 °C
Storage buffer	62.5 mM Tris-H <sub>3</sub> PO <sub>4</sub> (pH 7.5), 2% SDS, 1 mM EDTA, 10 mM DTT, 1 mM sodium azide, 33% glycerol
Important	This product is for RESEARCH USE ONLY and is not intended for therapeutic or diagnostic use. Not for human or veterinary use

---

## References

### Western blot: technique, theory, and trouble shooting.

Mahmood T et al (2012) North American journal of medical sciences 4  
**PubMedID** [23050259](#)

---