

Hello Bio, Inc.  
304 Wall St., Princeton, NJ 08540 USA

T. 609-683-7500  
F. 609-228-4994

customercare-usa@m2stage.hellobio.com



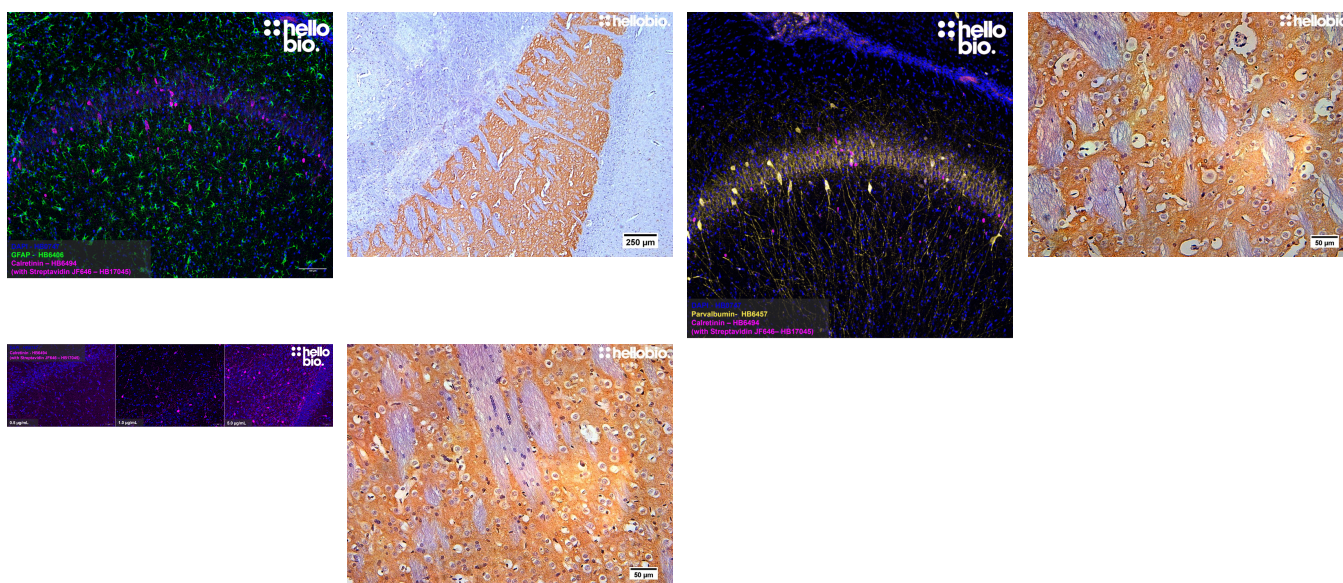
## DATASHEET

Goat Anti-Rabbit IgG H&L (Biotin) preadsorbed ValidAb™

### Product overview

<b>Name</b>	Goat Anti-Rabbit IgG H&L (Biotin) preadsorbed ValidAb™
<b>Cat No</b>	HB11036
<b>Host</b>	Goat
<b>Clonality</b>	Polyclonal
<b>Target</b>	Rabbit IgG H&L
<b>Conjugate</b>	Biotin
<b>Description</b>	Goat Anti-Rabbit IgG H&L (Biotin) preadsorbed secondary antibody. Part of the ValidAb™ range of highly validated, data-rich antibodies.

### Validation data



### Product information

<b>Immunogen</b>	Purified rabbit IgG
<b>Isotype</b>	IgG
<b>Purification</b>	Immunogen affinity chromatography. Pre-adsorbed with mouse and human serum proteins
<b>Concentration</b>	0.5 mg/ml
<b>Formulation</b>	Lyophilised. When reconstituted contains PBS with 1% recombinant albumin and less than 0.1% sodium azide

### Tested applications

<b>Applications</b>	ELISA, ICC, IHC, IHC-P, WB, IHC(IF)
<b>Western blot optimal concentration</b>	Tested at 1:10,000. Optimise dependent upon assay.
<b>IHC(IF) optimal concentration</b>	Tested at 1:250 dilution (2µg/ml). Optimise dependent upon assay.
<b>IHC-P optimal concentration</b>	Tested at 1:300 dilution. Optimise dependent upon assay.
<b>ICC optimal concentration</b>	Tested at 1:250 dilution (2µg/ml). Optimise dependent upon assay.
<b>Negative control</b>	While this antibody has been cross-adsorbed to reduce non-specific binding it is still often worthwhile to conduct a control experiment where the primary antibody is omitted to give confidence that the staining pattern observed is specific.

---

## Storage & Handling

**Storage instructions** -20°C then use reconstitution advice

**Reconstitution advice** We recommend reconstituting with either:

- dH<sub>2</sub>O and storing at 4°C
- 50:50 ratio of dH<sub>2</sub>O to glycerol and storing at -20°C
- dH<sub>2</sub>O then aliquot and store at -80°C

Take care when opening as the precipitate is extremely light and can easily be lost if disturbed. When reconstituting make sure that the antibody is thoroughly dissolved by pipetting up and down before giving the antibody a brief spin at <10,000g to make sure that all material is recovered and at the bottom of the tube.

For more information please see our detailed guide on [storing and using your antibody](#)

**Important** This product is for RESEARCH USE ONLY and is not intended for therapeutic or diagnostic use. Not for human or veterinary use

---

## References

### The use of antiavidin antibody and avidin-biotin-peroxidase complex in immunoperoxidase technics.

Hsu SM et al (1981) American journal of clinical pathology 75

**PubMedID** [6167159](#)

### Antigen Retrieval and Signal Amplification.

Dunkenberger L et al (2022) Methods in molecular biology (Clifton, N.J.) 2422

**PubMedID** [34859399](#)

---