

Hello Bio, Inc.
304 Wall St., Princeton, NJ 08540 USA

T. 609-683-7500
F. 609-228-4994

customercare-usa@m2stage.hellobio.com



DATASHEET

SuperBlot™ ECL Western Blotting Substrate Kit (High sensitivity)

Product overview

Name
Cat No
Biological description

SuperBlot™ ECL Western Blotting Substrate Kit (High sensitivity)
HB9308

Overview

Hello Bio SuperBlot™ ECL Western Blotting Substrate Kit (High sensitivity) is a high performance enhanced chemiluminescent (ECL) substrate suitable for Western blotting of low abundance proteins in complex mixtures with horseradish peroxidase (HRP) conjugated secondary antibodies.

Key Features

Sensitivity: Equivalent to ThermoFisher SuperSignal™ West Femto Maximum Sensitivity Substrate

Stability: 1 year at 4°C

Compatibility: Ideal for film and digital imaging. Compatible with PVDF and nitrocellulose membranes and all blocking solutions, primary and secondary antibodies.

SuperBlot™ ECL Western Blotting Substrate Kit (High sensitivity) produces an excellent signal/noise ratio with low background to produce publication quality Western blots.

Notes

We recommend:

- 100ml (50ml part A + 50ml part B) for developing around 65 blots of 10x7.5cm size (≈5,000cm² of membrane)
- 200ml (100ml part A + 100ml part B) for developing around 130 blots of 10x7.5cm size (≈10,000cm² of membrane)
- 500ml (250ml part A + 250ml part B) for developing around 330 blots of 10x7.5cm size (≈25,000cm² of membrane)

Applications
Customer comments

WB

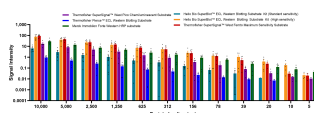
*Works beautifully, as always with any Hello Bio product! We tested this ECL Western Blotting substrate kit and it works marvelously. We get comparable result to our previous supplier's kit and are committed to switching to Hello Bio products for our ECL WB. Thank you Hello Bio as always for a wonderful product! **Verified customer, Aston University***

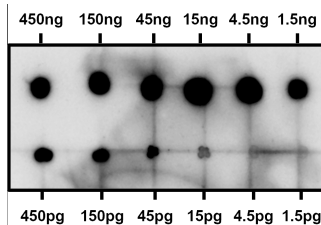
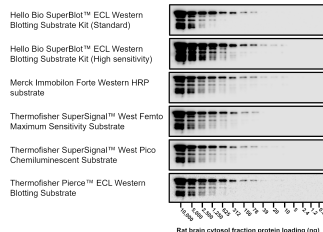
*I used your ECL solution for a trial and it worked well on my blots, I liked it! Less background and less incubation time which was great. **Verified customer, University of Bristol***

Description

High sensitivity ECL solution for developing chemiluminescent Western blots

Images





Biological Data

Application notes

Protocol for Chemiluminescent blot development with ECL

Digital Imaging

1. Remove blot from the final wash solution and place on an imaging tray
2. Mix equal quantities of part A and part B solutions being careful not to contaminate solutions by changing pipette tips
 1. For a 10x7.5cm gel we recommend 750µl of each solution
3. Add combined solutions to the blot making sure to cover the entire area.
4. Cover blot with a clear transparent sheet of plastic to prevent evaporation then immediately image.
 1. Be careful to not introduce any bubbles as these will show up in the final image.

Film Imaging

1. Mix equal quantities of part A and part B solutions being careful not to contaminate solutions by changing pipette tips.
 1. For a 10x7.5cm gel we recommend 750µl of each solution
2. Add combined solutions to a sheet of cling film large enough to fit the blot.
3. Remove the blot from the final wash buffer, dab off any excess then place into the ECL solution. Use tweezers move the blot in order to soak it in ECL making sure to cover each side thoroughly.
4. Dab off any excess ECL with filter paper then place into a pocket of clear plastic within a X-ray imaging cassette.
 1. Be careful to not introduce any bubbles as these will show up in the final image.
5. Move to a dark room.
6. Cut a piece of X-ray film to size then tape to the opposing door of the cassette. Close the cassette in one clean motion so that the film and blot are now in contact.
7. Expose the film for an appropriate amount of time.
 1. This will vary depending on the target protein and which primary and secondary antibodies are used.
8. Open the cassette and develop the film.

Solubility & Handling

Storage instructions

+4 °C (protect from light)

Storage buffer

Contains 0.05% ProClin-300

Important

This product is for RESEARCH USE ONLY and is not intended for therapeutic or diagnostic use. Not for human or veterinary use.