

Hello Bio, Inc.  
304 Wall St., Princeton, NJ 08540 USA

T. 609-683-7500  
F. 609-228-4994

customercare-usa@m2stage.hellobio.com



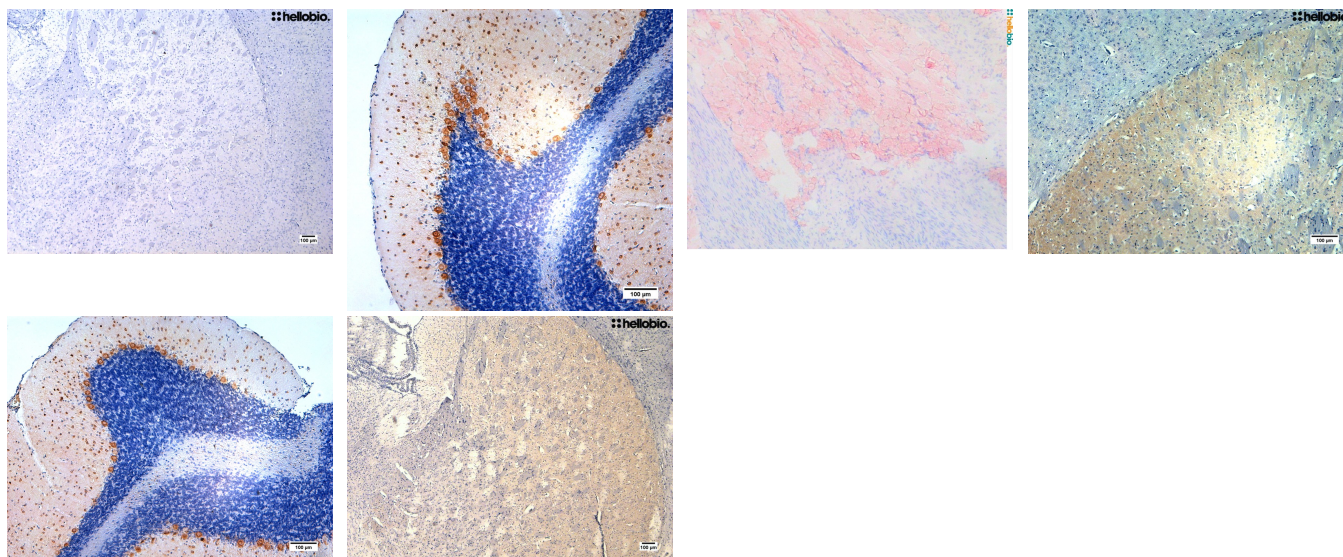
## DATASHEET

### Modified Mayer's Hematoxylin

#### Product overview

<b>Name</b>	Modified Mayer's Hematoxylin
<b>Cat No</b>	HB6189
<b>Alternative names</b>	Hematoxylin Solution (Mayer's, Modified)
<b>Biological description</b>	<p>Hematoxylin is a nuclear stain with a deep blue-purple color. It is used as a counterstain for immunohistochemical or hybridization procedures that use colorimetric substrates (e.g. alkaline phosphatase or peroxidase.)</p> <p>It is a component of one of the most widely used histology stains: the H&amp;E stain (Hematoxylin and Eosin stain).</p>
<b>Biological action</b>	Dyes & stains
<b>Description</b>	Nuclear stain. Component of H&E stain.

#### Images



#### Biological Data

<b>Application notes</b>	<b>Hematoxylin staining protocol for paraffin embedded sections</b>
--------------------------	---

1. Incubate paraffin embedded sections in histoclear for 20 minutes
2. Incubate slides in 100% ethanol for 3 minutes
3. Incubate slides in 90% ethanol for 3 minutes
4. Incubate slides in 70% ethanol for 3 minutes
5. Rinse in tap water

6. Incubate in hematoxylin solution for 5 minutes
  7. Rinse in running tap water for 5 minutes
  8. Dip in acid alcohol (8-12 fast dips)
    1. Recipe: 70% ethanol with 25mM HCl
  9. Incubate slides in tap water for 2 minutes
  10. Incubate slides in Scott's water for 2 minutes
    1. Recipe: 10g/l  $\text{MgSO}_4$ , 0.66g/l  $\text{NaHCO}_3$
  11. Dip and swish in 70% ethanol
  12. Dip and swish in 90% ethanol
  13. Incubate slides in 100% ethanol for 3 minutes
  14. Incubate slides in three changes of xylene for 1 minute per incubation
    1. Carry out in a fume hood as xylene is extremely toxic
  15. Mount with DPX and leave to dry in a fume hood overnight before imaging
- 

## Solubility & Handling

### Storage instructions Important

Room temperature

This product is for RESEARCH USE ONLY and is not intended for therapeutic or diagnostic use. Not for human or veterinary use

---

## References

### Tissue Processing and Hematoxylin and Eosin Staining

Feldman and Wolfe (2014) Methods Mol Biol 1180

**PubMedID** [25015141](#)

### The Wonderful Colors of the Hematoxylin-Eosin Stain in Diagnostic Surgical Pathology

CHan (2014) Int J Surg Pathol 22(1)

**PubMedID** [24406626](#)

### Hematoxylin and Eosin Staining of Tissue and Cell Sections

Fischer et al (2008) CSH Protoc 4986

**PubMedID** [21356829](#)

---